

SMART SOLUTIONS FOR THE LABELING INDUSTRY

LABEL REWINDER SERIES

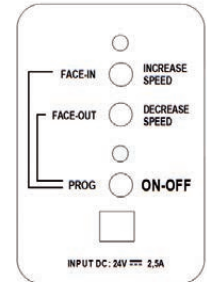
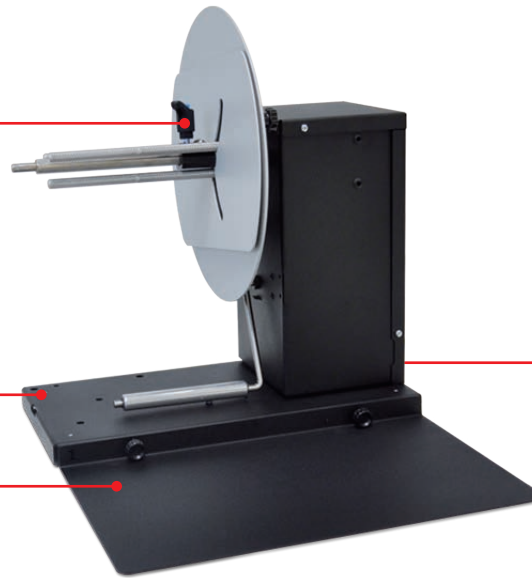


Adjustable core holder

"L" support (optional)

Easy to add or remove with a knob, it gives much more stability to the core holder.

Printer plate (included)



Control panel (behind)

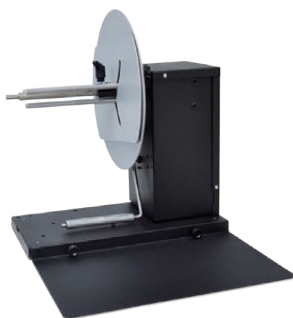
Our range of label rewinders can handle labels up to 4.72" (120mm), 5" (127mm) and 6.85" (174mm) wide and rewind rolls with a diameter up to 6.7" (170mm), 10" (250mm) and 11.81" (300mm) onto an adjustable core holder from 1.57" (76mm) up to 4.64" (118mm). It is possible to add an optional support for heavy rolls. If the unit is equipped with support, the core holder become from 1.81" up to 4.64" (46-118mm).

Rewinders are equipped with an external auto-switching 100/240VAC - 2.5A at 24V power supply and an electronic circuit controls the functions.

The printer must be put onto the rewinder's printer plate, in this way the correct rewinding operations are guaranteed and also the rewinder is fastened to the printer.

The rewinder has two types of speed adjustments, through the two buttons it is possible to set the maximum speed required while the tension arm will auto adjust the speed from zero to the set value. The control panel allows to set the label rewinding face-in or face-out option. When the unit is operating but the media is not loaded or it runs out, the tension arm reaches the lowest position and after few seconds the rewinder's rotation will be stopped while both leds blink and it beeps.

Models available



model **AD1211-S0**

Roll Diameter up to 10" (250mm)
Speed 225 rpm
Label Width up to 5" (127mm)
Adjustable Core Holder from 1.57" up to 4.64" (40-118mm)



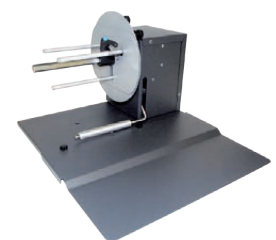
model **AD1221-S0**

Roll Diameter up to 10" (250mm)
Speed 225 rpm
Label Width up to 6.85" (174mm)
Adjustable Core Holder from 1.57" up to 4.64" (40-118mm)



model **AD2111-S2**

Roll Diameter up to 11.81" (300mm)
Speed 120 rpm
Label Width up to 5" (127mm)
Adjustable Core Holder from 1.81" up to 4.64" (46-118mm)
Support for heavy rolls



model **SRA**

Roll Diameter up to 6.7" (170mm)
Speed 225 rpm
Label Width up to 4.72" (120mm)
Adjustable Core Holder from 1.57" up to 3" (40-76mm)